

# GIZZARD OPENER

WITH AUXILIARY SKINNER



**AUTOMATED HIGH QUALITY GIZZARD PROCESSING MACHINE**

**HIGH QUALITY, HIGH PRODUCTIVITY**

High quality gizzard can be produced by simply placing on the GIZZARD OPENER.

**MAYEKAWA**  
**MYCOM**

# GIZZARD OPENER WITH AUXILIARY SKINNER

## FEATURES

### 1. Easy operation

Easy operation by correctly placing gizzard on the machine.

### 2. Auxiliary skinner

Highly efficient skinning in a subsequent manual processing by using integral auxiliary skinner.

\*Approximately 60-70% of inner yellow skin can be removed by auxiliary skinner subject to the conditions of raw material.

### 3. Easy maintenance and wash down

Easy maintenance and wash down by simply removing auxiliary skinner.

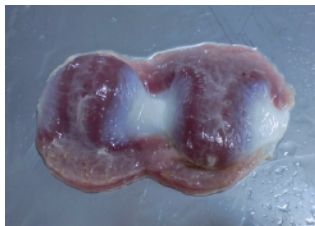
### 4. Safety

Safe working environment by safety sensors installed on loading and protection cover areas.

## PROCESSING IMAGE - OUTER DIMENSIONS

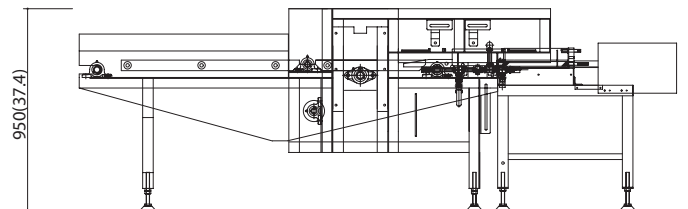
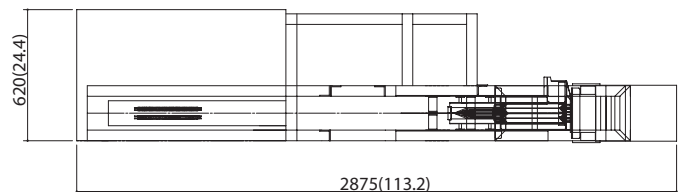


Input



Output

Dimensions [mm(in)]



## SPECIFICATIONS

Capacity	4,500 pieces/hour, maximum	
Model	MGZ33	
Applicable raw materials	Broiler Gizzard (25~50g or 0.8~1.6oz/piece)	*1
Standard dimensions	2,875mm(L)×620mm(W)×950mm(H) [113.2in(L) x 24.4in(W) x 37.4in (H)]	
Weight	280kg(620lbs)	
Utility	Electricity	3φ 200V 1.5kW
	Water supply	20ℓ/min (0.7CFM)
Option	Manual skinner	Finishing machine to remove inner yellow skin.

\*1 Please contact us for chicken species other than broiler.

\*2 Height is without the control panel.

**MAYEKAWA**  
**MYCOM**

The information on this brochure is subject to change without notice.

MAYEKAWA MFG.CO.,LTD.

3-14-15,Botan,Koto-ku,Tokyo 135-8482, JAPAN Tel.(81)-3-3642-8181 Fax.(81)-3-3643-7094

Robot & Engineering Division

Tel.(81)-3-3642-8966 Fax.(81)-3-3642-8271

<http://www.mayekawa.com>